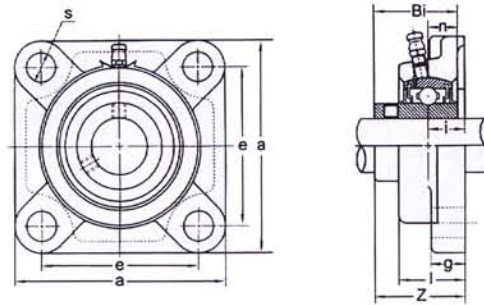


SQUARE FLANGE UNITS



item number	dimensions										bolt size	bearing number	houing number	weight Kg
	bore	a	e	i	g	l	s	z	Bi	n				
UCF202	15	86	64	15	12	25.5	12	33.3	31	12.7	10	UC202	F204	0.62
UCF203	17	86	64	15	12	25.5	12	33.3	31	12.7	10	UC203	F204	0.61
UCF204	20	86	64	15	12	25.5	12	33.3	31	12.7	10	UC204	F204	0.59
UCF205	25	95	70	16	14	27	12	35.7	34	14.3	10	UC205	F205	0.82
UCF206	30	108	83	18	14	31	12	40.2	38.1	15.9	14	UC206	F206	1.12
UCF207	35	117	92	19	16	34	14	44.4	42.9	17.5	14	UC207	F207	1.48
UCF208	40	130	102	21	16	36	16	51.2	49.2	19	14	UC208	F208	2.03
UCF209	45	137	105	22	18	38	16	52.2	49.2	19	14	UC209	F209	2.35
UCF210	50	143	111	22	18	40	16	54.6	51.6	19	16	UC210	F210	2.51
UCF211	55	162	130	25	20	43	19	58.4	55.6	22.2	16	UC211	F211	3.45
UCF212	60	175	143	29	20	48	19	68.7	65.1	25.4	16	UC212	F212	4.6
UCF213	65	187	149	30	20	50	19	69.7	65.1	25.4	20	UC213	F213	5.54
UCF214	70	193	152	31	24	54	19	75.4	74.6	30.2	20	UC214	F214	6.12
UCF215	75	200	159	34	24	56	19	78.5	77.8	33.3	20	UC215	F215	6.89
UCF216	80	208	165	34	24	58	23	83.3	82.6	33.3	20	UC216	F216	7.8
UCF217	85	220	175	36	26	63	23	87.6	85.7	34.1	20	UC217	F217	9.29
UCF218	90	235	187	40	26	68	23	96.3	96	39.7	22	UC218	F218	11.33

item number	dimensions										bolt size	bearing number	houing number	weight Kg
	bore	a	e	i	g	l	s	z	Bi	n				
UCF305	25	110	80	16	13	29	16	39	38	15	14	UC305	F305	1.2
UCF306	30	125	95	18	15	32	16	44	43	17	14	UC306	F306	1.8
UCF307	35	135	100	20	16	36	19	49	48	19	16	UC307	F307	2.2
UCF308	40	150	112	23	17	40	19	56	52	19	16	UC308	F308	2.9
UCF309	45	160	125	25	18	44	19	60	57	22	16	UC309	F309	3.5
UCF310	50	175	132	28	19	48	23	67	61	22	20	UC310	F310	4.8
UCF311	55	185	140	30	20	52	23	71	66	25	20	UC311	F311	5.6
UCF312	60	195	150	33	22	56	23	78	71	26	20	UC312	F312	6.7
UCF313	65	208	166	33	22	58	23	78	75	30	20	UC313	F313	7.8
UCF314	70	226	178	36	25	61	25	81	78	33	22	UC314	F314	10.1
UCF315	75	236	184	39	25	66	25	89	82	32	22	UC315	F315	11.1
UCF316	80	256	196	39	27	68	31	91	86	34	27	UC316	F316	12.8
UCF317	85	260	204	44	27	74	31	100	96	40	27	UC317	F317	15.4
UCF318	90	280	216	44	30	76	35	100	96	40	30	UC318	F318	19