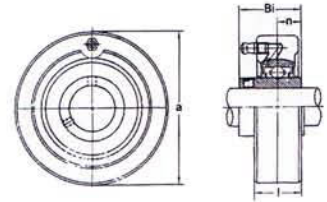


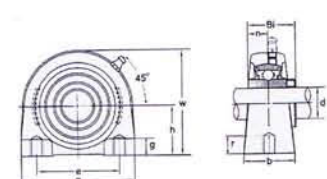
CYLINDRICAL CARTRIDGE UNITS

Item Number	bore	a	l	Bi	n	Bearing Number	Housing Number	Weight Kg
UCC202	15	72	20	31	12.7	UC202	C204	0.52
UCC203	17	72	20	31	12.7	UC203	C204	0.51
UCC204	20	72	20	31	12.7	UC204	C204	0.49
UCC205	25	80	22	34	14.3	UC205	C205	0.65
UCC206	30	85	27	38.1	15.9	UC206	C206	0.82
UCC207	35	90	28	42.9	17.5	UC207	C207	0.93
UCC208	40	100	30	49.2	19	UC208	C208	1.25
UCC209	45	110	31	49.2	19	UC209	C209	1.53
UCC210	50	120	33	51.6	19	UC210	C210	1.93



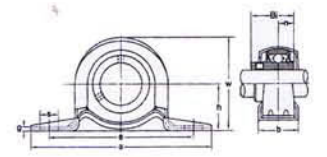
TAPPED BASE PILLOW BLOCKS

Item Number	bore	h	a	e	b	r	g	w	Bi	n	Bolt Size	Bearing Number	Housing Number	Weight Kg
UCPA202	15	30.2	76	52	40	12	11	62	31	12.7	10	UC202	PA204	0.63
UCPA203	17	30.2	76	52	40	12	11	62	31	12.7	10	UC203	PA204	0.62
UCPA204	20	30.2	76	52	40	12	11	62	31	12.7	10	UC204	PA204	0.6
UCPA205	25	36.5	84	56	45	15	12	72	34	14.3	10	UC205	PA205	0.81
UCPA206	30	42.9	94	66	50	18	12	84	38.1	15.9	14	UC206	PA206	1.2
UCPA207	35	47.6	110	80	55	20	13	95	42.9	17.5	14	UC207	PA207	1.7
UCPA208	40	49.2	116	84	58	20	13	100	49.2	19	14	UC208	PA208	1.9
UCPA209	45	54.2	120	90	60	22	13	108	49.2	19	14	UC209	PA209	2.2
UCPA210	50	57.2	130	94	64	25	14	116	51.6	19	16	UC210	PA210	2.6

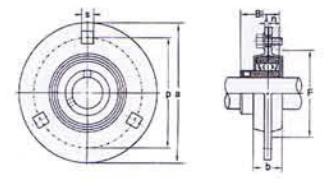


PRESSED STEEL BEARING UNITS

Item Number	bore	h	a	e	b	s	g	w	Bi	n	Bolt Size	Bearing Number	Housing Number	Weight Kg
SBPP201	12	22.2	86	68	25	9	2.4	44	22	6	8	SB201	PP203	0.15
SBPP202	15	22.2	86	68	25	9	2.4	44	22	6	8	SB202	PP203	0.14
SBPP203	17	22.2	86	68	25	9	2.4	44	22	6	8	SB203	PP203	0.12
SBPP204	20	25.4	98	76	32	9	2.4	50	24.7	7	8	SB204	PP204	0.19
SBPP205	25	28.6	103	86	32	11	3.2	56	27.7	7.5	10	SB205	PP205	0.21
SBPP206	30	33.3	117	95	38	11	4	66	30.3	8	10	SB206	PP206	0.42
SBPP207	35	39.7	129	106	42	11	4.6	78	32.9	8.5	10	SB207	PP207	0.6



Item Number	bore	a	p	t	b	s	F(min)	Bi	n	Bolt Size	Bearing Number	Housing Number	Weight Kg
SBPF201	12	81	63	2	14	7	49	22	6	6	SB201	PF203	0.21
SBPF202	15	81	63	2	14	7	49	22	6	6	SB202	PF203	0.2
SBPF203	17	81	63	2	14	7	49	22	6	6	SB203	PF203	0.18
SBPF204	20	90	71	2	16	9	56	24.7	7	8	SB204	PF204	0.25
SBPF205	25	95	76	2	18	9	60	27.7	7.5	8	SB205	PF205	0.35
SBPF206	30	113	90	2.6	18	11	71	30.3	8	8	SB206	PF206	0.54
SBPF207	35	122	100	2.6	20	11	81	32.9	8.5	10	SB207	PF207	0.71



Item Number	bore	a	e	t	b	s	C(min)	F	Bi	n	Bolt Size	Bearing Number	Housing Number	Weight Kg
SBPFL201	12	81	63.5	2	14	7.1	59	49	22	6	6	SB201	PFL201	0.25
SBPFL202	15	81	63.5	2	14	7.1	59	49	22	6	6	SB202	PFL202	0.24
SBPFL203	17	81	63.5	2	14	7.1	59	49	22	6	6	SB203	PFL203	0.22
SBPFL204	20	90	71.4	2	16	8.7	67	55.5	24.7	7	8	SB204	PFL204	0.29
SBPFL205	25	95	76.2	2	18	8.7	71	60.5	27.7	7.5	8	SB205	PFL205	0.36
SBPFL206	30	113	90.5	2.6	18	10.3	84	71.5	30.3	8	10	SB206	PFL206	0.56
SBPFL207	35	125	100	2.6	20	10.3	94	81	32.9	8.5	10	SB207	PFL207	0.7

